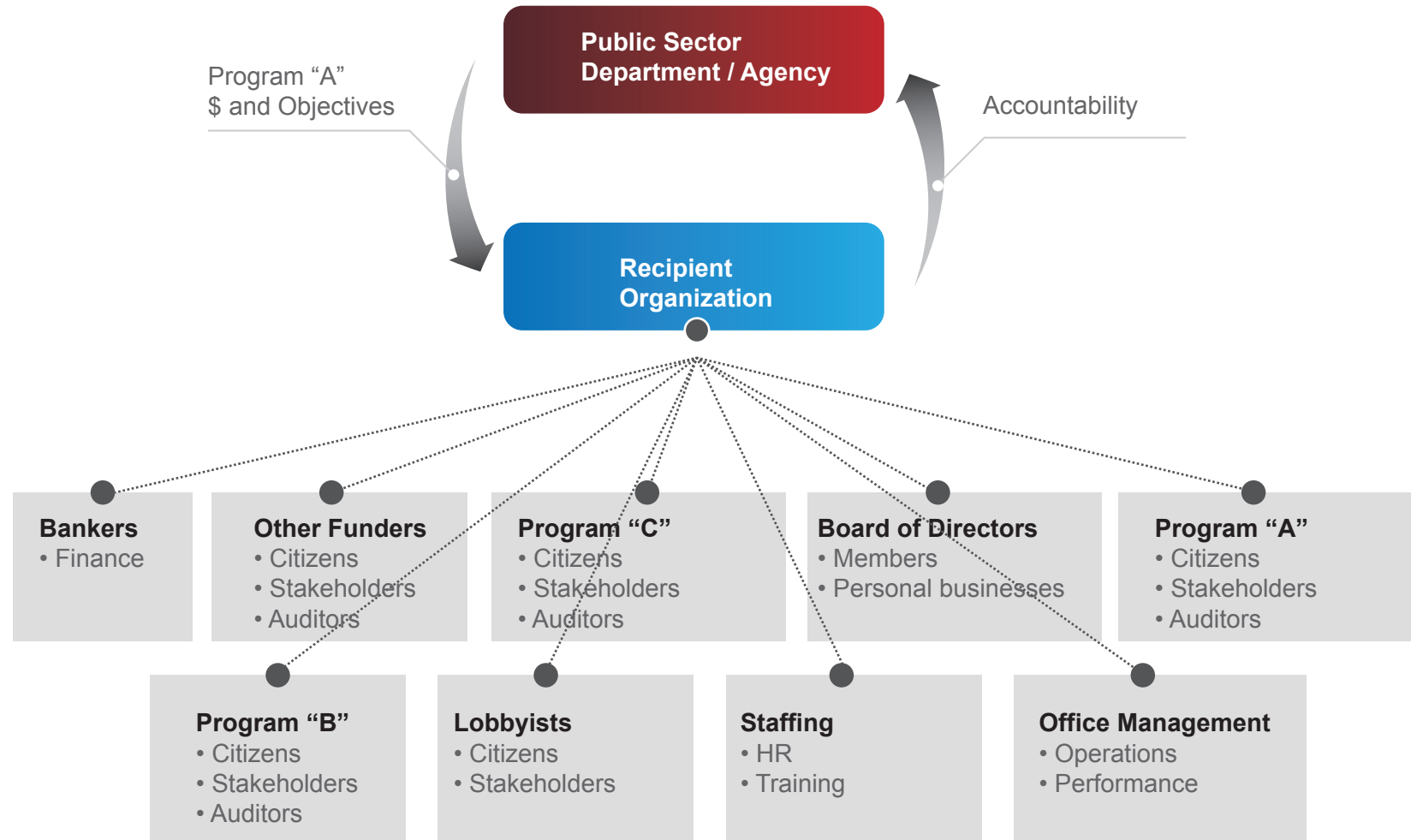


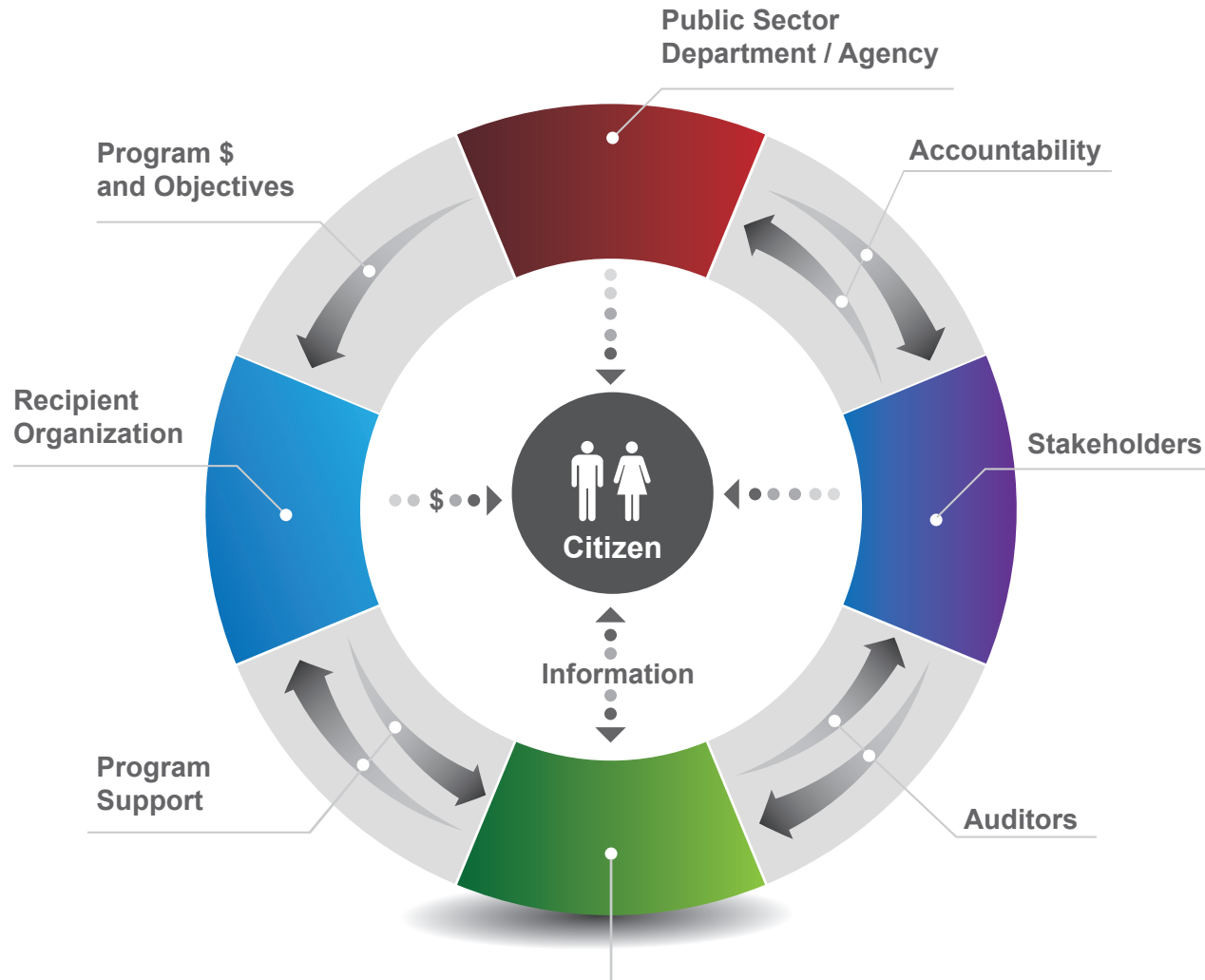
Wrong Way: Program Management without WelchGroup

With a patchwork of multiple programs and multiple stakeholders, the accountability is unclear and the citizen is moved to the periphery:



Right Way: Program Management with WelchGroup

Our simple but rigorous process enables public sector organizations to increase performance and clarity while reducing risk and cost...and the citizen is central.



Right Way: Program Management with WelchGroup

Our simple but rigorous process enables public sector organizations to increase performance and clarity while reducing risk and cost...and the citizen is central.

